

## Coming Up

### January 9

1:30 Book Club meets  
Sue Skenderian's

### January 11

9:30 Board Meeting  
Luria

### January 18

9:15 Coffee  
10:00 Lecture, Eik Kahng  
Ridley-Tree Installation

### January 23 (Mon)

8:30 AM Bust Trip  
LACMA

### February 1

9:15 Coffee  
10:00 Meeting/Lecture

### February 8

9:30 Board Meeting  
Luria

### February 15

9:15 Coffee  
10:00 Meeting/Lecture

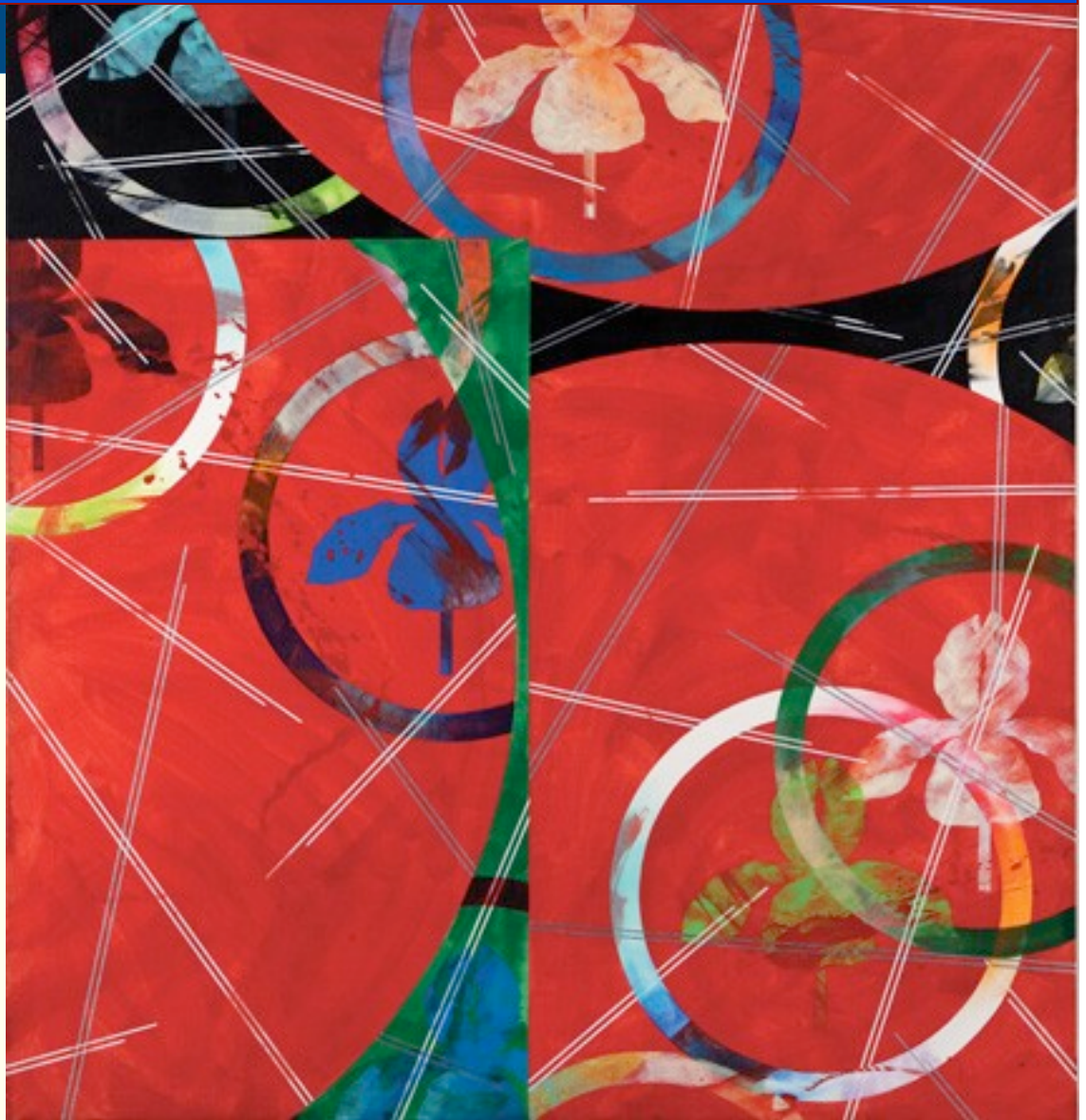
## Docent Trips for *Pacific Standard Time*

### February 27 (Mon)

Geffen Contemporary  
and Museum of  
Contemporary Art

### March 28 (Wed)

Pasadena Museum  
of California Art



*Klenator Draculus*, 1977, Billy Al Bengston Acrylic on canvas, 60 X 56"  
Frederick R. Weisman Art Foundation

I hope you have enjoyed a wonderful holiday and are looking forward to the new year. The fall certainly was filled with stimulating exhibitions that gave us a feast to present to the public: the impressive Picasso/Braque and Henri Riviere shows, the range of contemporary exhibitions, the re-opening of the Asian gallery, and the 18<sup>th</sup>-19<sup>th</sup> century art in Preston Mortin and Ridley-Tree. Equally important, our docent activities provided a range of opportunities to enhance our knowledge of the new exhibitions, such as hearing our speakers, the bus trip to the Getty, demonstrations of bronze casting and a fascinating look at the creative mind of Keith Puccinelli. And let us not forget our festive holiday party at Jerry Jensen's home. Jerry, all our thanks for your



Irene Stone

warm and thoughtful hospitality, as well as to all of those who helped make the event unfold so seamlessly. I'm sure we all thoroughly enjoyed getting to know our new provisional docents.

I am sure that this enthusiasm and energy will carry on into the new year. Our first Book Group meeting on Monday January 9, 1:30 p.m. at Sue Skenderian's home will discuss *Rebels in Paradise* by Hunter Drohowska-Philp. The January 18 Docent Council meeting will feature Eik Kahng speaking on the new Ridley-Tree installation. After the European teams had a tour by Eik, we realized how much all of us can benefit from her discussion of this installation.

Continuing with our *Pacific Standard Time* outings, our next bus trip to LACMA is scheduled for Monday, January 23, leaving at 8:30 a.m. from the corner of Cabrillo and Garden Streets. We will be having a tour of the "California Design 1930-1965: Living in a Modern Way" at noon. You can leave your check in the docent office or we will collect them at our **only** January docent council meeting on January 18. The cost is \$40 for the bus, plus entrance fees to the museum. The tour is free to us. Thus, regular visitors will pay \$40 plus \$12 for admission, a total of \$52. Seniors will pay \$40 plus \$8 admission, a total of \$48. Those who are members of LACMA will pay the bus fee only, \$40.

All my best wishes for a new year of peace, health and happiness. 🍷

### Message from our Vice President



Kathryn Padgett

The Holiday Party was a smashing success, with approximately 80 people in attendance. The Docent Council gives a special thank you to Jerry Jensen and his lovely wife, Nancy, for hosting again this year. Their inviting home and warm hospitality enhanced our holiday party. Michael Holland added to the ambiance with his mellow guitar music, and thanks to Christine, we had plenty of holiday bubbly and cheer at a bar tended by Doug McElwain and Roy Nixon. Sylvia Mabee graciously coordinated the invitations and paper goods, while Rosemarie Gebhart helped organize the food table. The social hour concluded with an uplifting message from Irene, and then Gretchen and I had the wonderful pleasure of introducing the mentors, who followed by introducing the provisional class. I think we all enjoyed

hearing about our new talent!

On that same note, Gretchen and I are pleased to announce that all 12 class members successfully completed their Three Minute talks. They return January 5<sup>th</sup> to a very full agenda until June, learning art history, doing weekly one page papers, conducting student tours, completing a formal research paper, an 8 Minute Talk and, finally, the 45 Minute Talk. What a reminder for all of us that going through our training program requires dedication, intellectual curiosity, and willingness to be coached.

I am wishing all of you a prosperous, happy, and art-filled New Year!

Now on to things related to *Pacific Standard Time*:

On February 11<sup>th</sup> through May 6<sup>th</sup>, our museum will participate in this *PST* event with a show called, "Pasadena to Santa Barbara: A Selected History of Art in Southern California (1951-1969)".

Until January 15<sup>th</sup>, The Natural History Museum of Los Angeles County has a *PST* exhibit titled, "Artistic Evolution: Southern California Artists at the Natural History Museum of Los Angeles County, 1945-1963".

You will see works by John Baldessari, Larry Bell, Billy Al Bengston, Tony Berlant, Frederick Hammersley, Lorser Feitelson, Robert Irwin, Craig Kauffman, Ed Moses, John McLaughlin, Lee Mullican, Mel Ramos, Ed

Ruscha, and Betye Saar.

<http://www.pacificstandardtime.org/exhibitions?id=artistic-evolution-southern-california-artists-at-the-natural-history-museum-of-los-angeles-county-1945-1963>

The Williams Gallery at Scripps College in Clairemont, CA will open a *PST* exhibit on January 21<sup>st</sup> through April 8<sup>th</sup> titled, " Clay's Tectonic Shift: John Mason, Ken Price, and Perter Voulkos, 1958-1968".

<http://rcwg.scrippscollege.edu/exhibitions/clays-tectonic-shift-john-mason-ken-price-and-peter-voulkos-1956-1968>

Closing January 8<sup>th</sup>, the Autry National Center in Griffiths Park has a *PST* exhibit titled, "Art Along the Hyphen: The Mexican-American Generation" that is has mostly realist painting and sculpture by six Angeleno artists. The works range in date from 1906 to the 1970s, with high points including the beautifully reserved still lifes of Eduardo Carrillo (1937-1997).

<http://theautry.org/exhibitions/art-along-the-hyphen-the-mexican-american-generation>

### Adult Touring for November, 2011



*Picasso and Braque* remained the big draw to the museum and docent tours in November:

Highlights - weekend and daily	71
Focus Tours	116
Picasso and Braque	164
Henri Rivière	<u>62</u>
	413

Shirley Waxman

November numbers started out with a bang but slowed a little towards the Thanksgiving holiday and the end of the month. Ridley-Tree Gallery opened to rave reviews!

In January we will see the closing of the *Henri Rivière* exhibition, and the last tour of *Picasso and Braque* on January 8<sup>th</sup>. With these exhibitions leaving the docent tours will focus on the permanent collection. There will be no 2 pm Sunday tours for the month of January. Thank you to Jerry Jensen, Irene Stone, Vikki Duncan and Julie Allen for leading Special Request tours this month.

### Docent Book Club



Sue Billig

*Rebels in Paradise: The Los Angeles Art Scene and the 1960s*

By Hunter Drohojowska-Philp

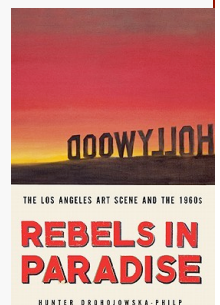
The next meeting is scheduled for **Monday, January 9 at 1:30**

Our hostess this month will be Sue Skenderian

5583 Calle Arena

684-6384

Please RSVP to her at [sskenderian@dock.net](mailto:sskenderian@dock.net)



By Christine Holland



We were fortunate to be able to visit Kyoto, Japan in early December. The red maple leaves were still in full glory and we visited just a few of the one thousand temples in the city.

Our hosts also took us out to one of the most beautiful museums created, the Miho Museum, designed by I.M. Pei, which opened in 1997. It is located about an hour's drive from Kyoto, literally tucked into gorgeous mountain terrain – 80% of the museum is underground. One approaches the entrance through a long tunnel, then walks across a suspension bridge to the entrance. The visible architecture is a contemporary structure which harmonizes with the natural surroundings, and features granite and wood surfaces, geometric glass ceilings and light-filled interior spaces. The collections are beautifully displayed, in darkened rooms with the objects bathed in soft lighting. Unfortunately, all photos of the exhibits were prohibited, but I can share with you a few photos of the non-exhibit spaces which were a delight to enjoy. Even better is a short video taken by another visitor: <http://www.youtube.com/watch?v=8ljz2K11kk>

If you ever travel to Japan, this is a delightful and memorable museum to visit. 🍁



# Holiday Cheer, 2011





