



Janna Ireland, American, b. 1985
Hillside Memorial Park, Number 1
2019
archival pigment print
image: 24 × 36 in. (61 × 91.4 cm)
sheet: 28 × 40 in. (71.1 × 101.6 cm)
Museum Purchase, Eric A. Skipsey Acquisition Fund
2021.5.1

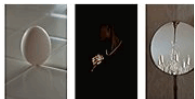
MCCORMICK:



Janna Ireland, American, b. 1985
Hillside Memorial Park, Number 2
2019
archival pigment print
image: 24 × 36 in. (61 × 91.4 cm)
sheet: 28 × 40 in. (71.1 × 101.6 cm)
Museum Purchase, Eric A. Skipsey Acquisition Fund
2021.5.2



Janna Ireland, American, b. 1985
Hillside Memorial Park, Number 3
2019
archival pigment print
image: 24 × 36 in. (61 × 91.4 cm)
sheet: 28 × 40 in. (71.1 × 101.6 cm)
Museum Purchase, Eric A. Skipsey Acquisition Fund
2021.5.3



Janna Ireland, American, b. 1985
Index (An Egg on Its End, Diamonds and Pearls, Chandelier)
from the series "The Spotless Mirror"
2011-2013
Archival pigment prints
overall: 30 × 20 in. (76.2 × 50.8 cm)
overall installed: 30 × 60 in. (76.2 × 152.4 cm)
Museum purchase, Eric A. Skipsey Acquisition Fund
2023.3.1a-c



Janna Ireland, American, b. 1985
Untitled
from the series "West Hollywood"
2012
Archival pigment print
overall: 20 × 16 in. (50.8 × 40.6 cm)
Museum purchase, Eric A. Skipsey Acquisition Fund
2023.3.2



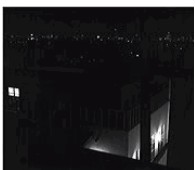
Janna Ireland, American, b. 1985
Untitled
from the series "West Hollywood"
2012
Archival pigment print
overall: 20 × 16 in. (50.8 × 40.6 cm)
Museum purchase, Eric A. Skipsey Acquisition Fund
2023.3.3



Janna Ireland, American, b. 1985
Untitled
from the series "West Hollywood"
2012
Archival pigment print
overall: 20 × 16 in. (50.8 × 40.6 cm)
Museum purchase, Eric A. Skipsey Acquisition Fund
2023.3.4



Janna Ireland, American, b. 1985
Untitled
from the series "West Hollywood"
2012
Archival pigment print
overall: 20 × 16 in. (50.8 × 40.6 cm)
Museum purchase, Eric A. Skipsey Acquisition Fund
2023.3.5



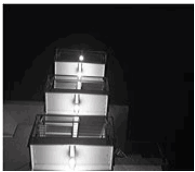
Janna Ireland, American, b. 1985
Untitled
from the series "West Hollywood"
2012
Archival pigment print
overall: 20 × 16 in. (50.8 × 40.6 cm)
Museum purchase, Eric A. Skipsey Acquisition Fund
2023.3.6



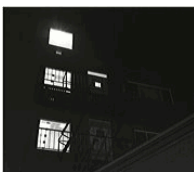
Janna Ireland, American, b. 1985
Untitled
from the series "West Hollywood"
2012
Archival pigment print
overall: 20 × 16 in. (50.8 × 40.6 cm)
Museum purchase, Eric A. Skipsey Acquisition Fund
2023.3.7



Janna Ireland, American, b. 1985
Untitled
from the series "West Hollywood"
2012
Archival pigment print
overall: 20 × 16 in. (50.8 × 40.6 cm)
Museum purchase, Eric A. Skipsey Acquisition Fund
2023.3.8



Janna Ireland, American, b. 1985
Untitled
from the series "West Hollywood"
2012
Archival pigment print
overall: 20 × 16 in. (50.8 × 40.6 cm)
Museum purchase, Eric A. Skipsey Acquisition Fund
2023.3.9



Janna Ireland, American, b. 1985
Untitled
from the series "West Hollywood"
2012
Archival pigment print
overall: 20 × 16 in. (50.8 × 40.6 cm)
Museum purchase, Eric A. Skipsey Acquisition Fund
2023.3.10



Janna Ireland, American, b. 1985
Untitled
from the series "West Hollywood"
2012
Archival pigment print
overall: 20 × 16 in. (50.8 × 40.6 cm)
Museum purchase, Eric A. Skipsey Acquisition Fund
2023.3.11



Janna Ireland, American, b. 1985
Untitled
from the series "West Hollywood"
2012
Archival pigment print
overall: 20 × 16 in. (50.8 × 40.6 cm)
Museum purchase, Eric A. Skipsey Acquisition Fund
2023.3.12



Janna Ireland, American, b. 1985
Untitled
from the series "West Hollywood"
2012
Archival pigment print
overall: 20 × 16 in. (50.8 × 40.6 cm)
Museum purchase, Eric A. Skipsey Acquisition Fund
2023.3.13



Janna Ireland, American, b. 1985
La Canada Ceiling
from the series Regarding Paul R. Williams
2016
frame: 27 × 18 in. (68.6 × 45.7 cm)
EL.2024.1.1



Janna Ireland, American, b. 1985
Golden State Mutual Life Insurance
from the series Regarding Paul R. Williams
2017
frame: 36 × 24 in. (91.4 × 61 cm)
EL.2024.1.2



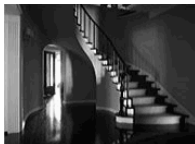
Janna Ireland, American, b. 1985
TITLE TBD - [Staircase with Deer]
from the series Regarding Paul R. Williams
EL.2024.1.3



Janna Ireland, American, b. 1985
First AME Church
from the series Regarding Paul R. Williams
2017
frame: 24 × 36 in. (61 × 91.4 cm)
EL.2024.1.4



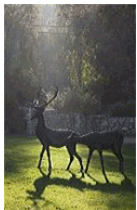
Janna Ireland, American, b. 1985
Franz Hall (UCLA)
from the series Regarding Paul R. Williams
2017
frame: 24 × 36 in. (61 × 91.4 cm)
EL.2024.1.5



Janna Ireland, American, b. 1985
Hancock Park, Number 1
from the series Regarding Paul R. Williams
Gelatin silver print
frame: 27 × 18 in. (68.6 × 45.7 cm)
EL.2024.1.6



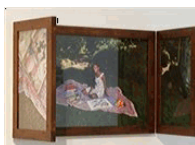
Janna Ireland, American, b. 1985
TITLE TBD - [House Front with Dog Sculpture]
from the series Regarding Paul R. Williams
EL.2024.1.7



Janna Ireland, American, b. 1985
Deer
from the series The Spotless Mirror
2011
frame: 14 × 21 in. (35.6 × 53.3 cm)
EL.2024.1.8



Janna Ireland, American, b. 1985
Cream
from the series Milk and Honey
2018
frame: 30 × 45 in. (76.2 × 114.3 cm)
EL.2024.1.9



Janna Ireland, American, b. 1985
The Spotless Mirror
from the series The Spotless Mirror
2012
EL.2024.1.10



Janna Ireland, American, b. 1985
The Black Suit
from the series *The Spotless Mirror*
2012
EL.2024.1.11



Janna Ireland, American, b. 1985
Dinner Party
from the series *Milk and Honey*
2018
frame: 30 × 45 in. (76.2 × 114.3 cm)
EL.2024.1.12



Janna Ireland, American, b. 1985
Spare Key
from the series *Milk and Honey*
2019
Chromogenic print
frame: 36 × 24 in. (91.4 × 61 cm)
EL.2024.1.13



Janna Ireland, American, b. 1985
Fable
from the series *Milk and Honey*
2019
Chromogenic print
frame: 36 × 24 in. (91.4 × 61 cm)
EL.2024.1.14



Janna Ireland, American, b. 1985
Estate
from the series *Milk and Honey*
2019
Chromogenic prints
frame (each): 36 × 24 in. (91.4 × 61 cm)
EL.2024.1.15.a-h

Janna Ireland Checklist



Janna Ireland, American, b. 1985

Wife and Mother

from the series Milk and Honey

2019

Chromogenic prints

frame (each): 20 × 30 in. (50.8 × 76.2 cm)

EL.2024.1.16.a,b



Janna Ireland, American, b. 1985

The Little Friend

from the series Tender Boughs

2020

EL.2024.1.17



Janna Ireland, American, b. 1985

TITLE TBD - [Boys from behind on couch]

from the series Tender Boughs

2020

EL.2024.1.18



Janna Ireland, American, b. 1985

Mothering 5

from the series Tender Boughs

2021

EL.2024.1.19



Janna Ireland, American, b. 1985

Mothering 6

from the series Tender Boughs

2021

EL.2024.1.20



Janna Ireland, American, b. 1985

38

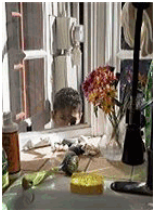
from the series Tender Boughs

2023

EL.2024.1.21



Janna Ireland, American, b. 1985
Scully
from the series Tender Boughs
2023
EL.2024.1.22



Janna Ireland, American, b. 1985
Kitchen Window
from the series Tender Boughs
2022
EL.2024.1.23



Janna Ireland, American, b. 1985
Title TBD
2023
EL.2024.1.24



Janna Ireland, American, b. 1985
Recession
2023
Mixed media
object (approx): 3 × 3 ft. (91.4 × 91.4 cm)
component (approx): 4 × 10 in. (10.2 × 25.4 cm)
component (approx): 6 × 15 in. (15.2 × 38.1 cm)
component (approx): 8 × 18 in. (20.3 × 45.7 cm)
EL.2024.1.25



Janna Ireland, American, b. 1985
Paul Williams's Luella Garvey Residence, Reno, Nevada, 1934
2021
Pigment print
frame: 30 × 20 in. (76.2 × 50.8 cm)
EL.2024.1.26

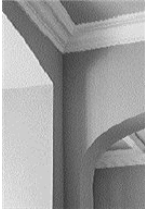


Janna Ireland, American, b. 1985
Paul Williams's Luella Garvey Residence, Reno, Nevada, 1934
2021
Pigment print
frame: 20 × 30 in. (50.8 × 76.2 cm)
EL.2024.1.27

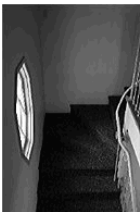
ALA STORY:



Janna Ireland, American, b. 1985
Paul Williams's Luella Garvey Residence, Reno, Nevada, 1934
2021
Pigment print
frame: 30 × 20 in. (76.2 × 50.8 cm)
EL.2024.1.28



Janna Ireland, American, b. 1985
Paul Williams's Luella Garvey Residence, Reno, Nevada, 1934
2021
Pigment print
frame: 48 × 32 in. (121.9 × 81.3 cm)
EL.2024.1.29



Janna Ireland, American, b. 1985
Paul Revere Williams's Herman Residence, Reno, Nevada, 1936
2021
Pigment print
frame: 30 × 20 in. (76.2 × 50.8 cm)
EL.2024.1.30



Janna Ireland, American, b. 1985
Paul Revere Williams's Herman Residence, Reno, Nevada, 1936
2021
Pigment print
frame: 30 × 20 in. (76.2 × 50.8 cm)
EL.2024.1.31



Janna Ireland, American, b. 1985
Paul Revere Williams's Herman Residence, Reno, Nevada, 1936
2021
Pigment print
frame: 30 × 20 in. (76.2 × 50.8 cm)
EL.2024.1.32



Janna Ireland, American, b. 1985
Paul Revere Williams's The First Church of Christ, Scientist, Reno, Nevada, 1939
2021
Pigment print
frame: 48 × 32 in. (121.9 × 81.3 cm)
EL.2024.1.33



Janna Ireland, American, b. 1985
Paul Revere Williams's The First Church of Christ, Scientist, Reno, Nevada, 1939
2021
Pigment print
frame: 30 × 20 in. (76.2 × 50.8 cm)
EL.2024.1.34



Janna Ireland, American, b. 1985
Paul Revere Williams's The First Church of Christ, Scientist, Reno, Nevada, 1939
2021
Pigment print
frame: 30 × 20 in. (76.2 × 50.8 cm)
EL.2024.1.35



Janna Ireland, American, b. 1985
Paul Williams's Circle L Ranch House, Dyer, Nevada, 1941
2021
Pigment print
frame: 30 × 20 in. (76.2 × 50.8 cm)
EL.2024.1.36



Janna Ireland, American, b. 1985
Paul Williams's Circle L Ranch House, Dyer, Nevada, 1941
2021
Pigment print
frame: 30 × 20 in. (76.2 × 50.8 cm)
EL.2024.1.37



Janna Ireland, American, b. 1985
Paul Williams's Berkley Square, Las Vegas, Nevada, 1954
2018
Pigment print
frame: 12 × 18 in. (30.5 × 45.7 cm)
EL.2024.1.38



Janna Ireland, American, b. 1985
Paul Williams's Berkley Square, Las Vegas, Nevada, 1954
2018
Pigment print
frame: 12 × 18 in. (30.5 × 45.7 cm)
EL.2024.1.39



Janna Ireland, American, b. 1985
Paul Williams's Highlands Square, Las Vegas, Nevada, 1956
2018
Pigment print
frame: 12 × 18 in. (30.5 × 45.7 cm)
EL.2024.1.40



Janna Ireland, American, b. 1985
Paul Williams's Highlands Square, Las Vegas, Nevada, 1956
2018
Pigment print
frame: 12 × 18 in. (30.5 × 45.7 cm)
EL.2024.1.41



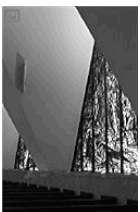
Janna Ireland, American, b. 1985
Paul Williams's Guardian Angel Cathedral, Las Vegas, Nevada, 1963
2018
Pigment print
frame: 48 × 32 in. (121.9 × 81.3 cm)
EL.2024.1.42



Janna Ireland, American, b. 1985
Paul Williams's Guardian Angel Cathedral, Las Vegas, Nevada, 1963
2018
Pigment print
frame: 30 × 20 in. (76.2 × 50.8 cm)
EL.2024.1.43



Janna Ireland, American, b. 1985
Paul Williams's Guardian Angel Cathedral, Las Vegas, Nevada, 1963
2018
Pigment print
frame: 30 × 20 in. (76.2 × 50.8 cm)
EL.2024.1.44



Janna Ireland, American, b. 1985
Paul Williams's Guardian Angel Cathedral, Las Vegas, Nevada, 1963
2018
Pigment print
frame: 30 × 20 in. (76.2 × 50.8 cm)
EL.2024.1.45



Janna Ireland, American, b. 1985

Paul Revere Williams' Herman Residence, Reno, Nevada, 1936

2021

Pigment print

image: 24 × 36 in. (61 × 91.4 cm)

EL.2024.1.46