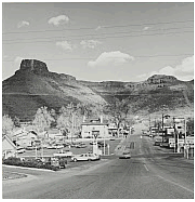


Final exhibition checklist for "A Time of Gifts" [10/05-22]



Robert ADAMS, American, b. 1937

Golden, Colorado

1969, printed 1970s

gelatin silver print

image-sheet: 5 5/8 × 6 in. (14.3 × 15.2 cm)

frame: 16 × 14 1/2 × 1 1/4 in. (40.6 × 36.8 × 3.2 cm)

SBMA, Museum purchase with funds provided by PhotoFutures
2018.24



Laura AGUILAR, American, 1959 - 2018

Center #73

2001

Gelatin silver print

frame: 25 × 21 in. (63.5 × 53.3 cm)

image: 13 1/4 × 18 3/8 in. (33.7 × 46.7 cm)

Gift of Diane Ross Trust

2021.24.8



Diane ARBUS, American, 1924-1971

Bishop by the Sea, Santa Barbara, Cal. 1964

1964-65

gelatin silver print

sheet: 11 × 14 in. (27.9 × 35.6 cm)

image: 6 3/4 × 10 in. (17.1 × 25.4 cm)

Gift of Jeffrey Fraenkel and Frish Brandt

2019.38.3



Ernest J. BELLOCQ, USA, 1873-1949

Storyville Portrait

ca.1912

Gelatin silver printing-out-paper print

mat: 17 × 14 in. (43.2 × 35.6 cm)

Gift of Kenneth A. Turner and Mark A. Albertson

2021.20.1



Ruth BERNHARD, American, born Germany, 1905-2006

Hourglass

1971

Gelatin silver print

frame: 21 × 17 in. (53.3 × 43.2 cm)

image: 10 × 7 in. (25.4 × 17.8 cm)

Gift of Diane Ross Trust

2021.15.18



Dawoud BEY, American, b. 1953

Untitled #10 (Whedon-Hinsdale House Through Branches)

from the series, "Night Coming Tenderly, Black"

2017

Gelatin silver print, edition 5 of 6

image: 44 × 55 in. (111.8 × 139.7 cm)

sheet: 48 × 59 in. (121.9 × 149.9 cm)

Museum Purchase, Funds Provided by the Luria Foundation and The Dana and Albert R. Broccoli Charitable Foundation

2021.21



Margaret BOURKE-WHITE, American, 1904-1971

The George Washington Bridge

1933

vintage gelatin silver print, (taped on buff colored paper)

image: 14 1/2 × 8 3/4 in. (36.8 × 22.2 cm)

frame: 23 1/4 × 17 7/8 × 1 1/2 in. (59.1 × 45.4 × 3.8 cm)

SBMA, Gift of the Charles Newman Trust

2017.44.3



Kwame BRATHWAITE, American, b. 1938

Untitled (Garvey Day Parade - Harlem)

1967, printed 2018

archival pigment print

object: 30 × 30 in. (76.2 × 76.2 cm)

frame: 31 × 31 in. (78.7 × 78.7 cm)

Museum Purchase, Eric A. Skipsey Acquisition Fund

2020.7



Kwame BRATHWAITE, American, b. 1938

Untitled (Charles Peaker, Street Speaker, head of ANPM after Carlos Cooks passed away, on 125th street)

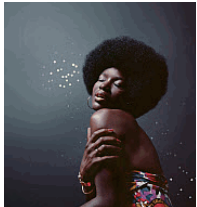
1968, printed 2016

archival pigment print, mounted and framed

edition 2 of 5

frame: 30 × 30 in. (76.2 × 76.2 cm)

Museum Purchase with funds provided by the Eric A. Skipsey Acquisition Fund
2020.23.1



Kwame BRATHWAITE, American, b. 1938

Changing Times

1973, printed 2021

Archival pigment print, mounted and framed

edition 2 of 5

overall: 30 × 30 in. (76.2 × 76.2 cm)

Purchased with The Dana and Albert R. Broccoli Charitable Foundation Fund
2022.10.1



Harry CALLAHAN, American, 1912-1999

Weed Against Sky, Detroit

1948, printed later

gelatin silver print, mounted

image: 7 1/2 × 6 7/8 in. (19.1 × 17.5 cm)

frame: 21 1/8 × 17 7/8 × 1 1/2 in. (53.7 × 45.4 × 3.8 cm)

SBMA, Gift of the Charles Newman Trust
2017.44.4



Nell CAMPBELL, American, b. 1946

Little Chenier, Louisiana

2012, printed 2021

chromogenic print

overall: 35 × 44 in. (88.9 × 111.8 cm)

Funds provided by Beth Gates-Warren and Bob Boghosian
2021.4



Marie COSINDAS, American, 1925-2017

The Blue Vase, Los Angeles

1980, printed 2014

archival pigment print

image: 5 1/2 × 7 in. (14 × 17.8 cm)

sheet: 11 × 8 1/2 in. (27.9 × 21.6 cm)

mat: 17 × 14 in. (43.2 × 35.6 cm)

SBMA, Museum Purchase with funds provided by PhotoFutures
2016.6



Bruce DAVIDSON, American, b. 1933

Widow of Montmartre

1956

gelatin silver print

image: 8 × 12 in. (20.3 × 30.5 cm)

sheet: 11 × 14 in. (27.9 × 35.6 cm)

SBMA, Gift of Roger A. Eichholz
2018.14.1



Michael DISFARMER, American, 1884-1959

Louise, Jarita, and Billie Hodges

1944

gelatin silver print

image: 3 × 5 in. (7.6 × 12.7 cm)

sheet: 3 1/2 × 5 1/2 in. (8.9 × 14 cm)

SBMA, Gift of Michael Yanover and Rhonda Milrad in memory of Philip Yanover
2016.32.8



Awol ERIZKU, American, born Ethiopia, b. 1988

Untitled (Amanda)

2021

digital C-print

edition 1 of 3

image: 73 × 55 in. (185.4 × 139.7 cm)

frame: 75 × 57 × 2 in. (190.5 × 144.8 × 5.1 cm)

Museum purchase with funds provided by the Luria Foundation
2021.9.2



Awol ERIZKU, American, born Ethiopia, b. 1988

Falcon (wings)

2022

Duratrans on lightbox. edition 1 of 3

overall: 60 13/16 × 49 5/16 × 5 3/4 in. (154.5 × 125.3 × 14.6 cm)

The Luria/Budgor Family Foundation

2022.15.2



Larry FINK, American, b. 1941

Untitled (from the portfolio: "Social Graces")

2006

gelatin silver photographs

image: 32 × 32 in. (81.3 × 81.3 cm)

sheet: 36 × 36 in. (91.4 × 91.4 cm)

Gift of the Yanover Family Trust

2021.34.1



Trude FLEISCHMANN, Austrian, 1895-1990

Untitled [Portrait of Helen Post]

ca. 1933

Vintage gelatin silver print

image: 9 × 6 5/8 in. (22.9 × 16.8 cm)

mat: 20 × 16 in. (50.8 × 40.6 cm)

Gift of Linda Wolcott Moore in Memory of Marion Post Wolcott

2021.18.1



Lee FRIEDLANDER, American, b. 1934

Canyon de Chelly, Arizona

1983

gelatin silver print

image: 13 × 8 1/2 in. (33 × 21.6 cm)

sheet: 14 × 11 in. (35.6 × 27.9 cm)

mat: 18 × 14 in. (45.7 × 35.6 cm)

Gift of Jeffrey Fraenkel and Frish Brandt

2021.35.3



Flor GARDUÑO, Mexican, b. 1957

Trenza, Ecuador

1991

gelatin silver print

image: 12 1/2 × 9 in. (31.8 × 22.9 cm)

sheet: 14 × 11 in. (35.6 × 27.9 cm)

mat: 22 × 18 in. (55.9 × 45.7 cm)

SBMA, Gift of Joan Almond

2016.37.15



Otto John Gaul, American, 1891 - 1966

Hermes, World's Fair, New York

1939-1940

Gelatin silver print

image: 10 × 8 3/4 in. (25.4 × 22.2 cm)

sheet: 12 1/4 × 10 1/2 in. (31.1 × 26.7 cm)

Gift of Ruth Lasell

2022.21.1



Emmet GOWIN, American, b. 1941

Barry and Dwayne, Danville

1969

Gelatin silver print

Gift of Diane Ross Trust

2021.15.2



Emil Otto HOPPÉ, British, 1878-1972

Madame Thamar Karasavina, L'Oiseau de Feu (Tamara Karsavina in The Firebird)

1911

rotogravure

image: 7 5/8 × 4 1/4 in. (19.4 × 10.8 cm)

sheet: 8 × 4 1/2 in. (20.3 × 11.4 cm)

sheet (support paper): 14 × 9 1/2 in. (35.6 × 24.1 cm)

SBMA, Gift of Ellen Lawson in memory of Karen Sinsheimer

2017.38.1



Eikoh HOSOE, Japanese, b. 1933

Ordeal by Roses

1961-1962

Gelatin silver print

frame: 30 × 24 in. (76.2 × 61 cm)

image: 21 1/4 × 14 1/2 in. (54 × 36.8 cm)

Gift of Diane Ross Trust

2021.24.4



John Houck, American, b. 1977
Balsa Block Boat
2015
Archival pigment print
frame: 23 3/4 × 30 5/8 in. (60.3 × 77.8 cm)
Gift of Elaine Gray
2022.9



Janna Ireland, American, b. 1985
Outdoor Faucet
2020
archival pigment print
sheet: 20 × 30 in. (50.8 × 76.2 cm)
Museum Purchase, Eric A. Skipsey Acquisition Fund
2021.5.4



Graciela ITURBIDE, Mexican, b. 1942
Mujer ángel, Desierto de Sonora, México (Angel Woman, Sonora Desert, Mexico)
1979
gelatin silver print
image: 13 × 18 1/4 in. (33 × 46.4 cm)
sheet: 16 × 19 3/4 in. (40.6 × 50.2 cm)
SBMA, Gift of Joan Almond
2016.37.16



Clarence Kennedy, American, 1829 - 1872
***from The Tabernacle of the Sacrament by Desidero Da Settignano and Assistants:
Volume V, Studies In The History and Criticism of Sculpture***
1929
mounted gelatin silver photographs
sheet: 19 1/2 × 12 in. (49.5 × 30.5 cm)
image: 9 1/2 × 6 7/16 in. (24.1 × 16.4 cm)
Gift of Jeffrey Dwyer and Elizabeth O'Grady in Memory of Robert Henning
2019.20.4



Clarence Kennedy, American, 1829 - 1872
***from The Tabernacle of the Sacrament by Desidero Da Settignano and Assistants:
Volume V, Studies In The History and Criticism of Sculpture***
1929
mounted gelatin silver photographs
sheet: 19 1/2 × 12 in. (49.5 × 30.5 cm)
image: 10 1/4 × 5 11/16 in. (26 × 14.4 cm)
Gift of Jeffrey Dwyer and Elizabeth O'Grady in Memory of Robert Henning
2019.20.25



György KEPES, American, born Hungary, 1906-2001

Self Portrait, Berlin

1930

Gelatin silver print

Museum Purchase, The Dana and Albert R. Broccoli Charitable Foundation
2022.14.5



André KERTÉSZ, American, born Hungary, 1894-1985

Statue bust in park

1962

vintage gelatin silver print

image: 9 3/4 × 8 7/8 in. (24.8 × 22.5 cm)

sheet: 10 × 8 1/8 in. (25.4 × 20.6 cm)

SBMA, Gift of Glen and Suzi Serbin

2018.20.1.6



André KERTÉSZ, American, born Hungary, 1894-1985

Hungary

1915

Vintage gelatin silver print

image: 2 5/16 × 1 3/4 in. (5.9 × 4.4 cm)

2022.13.1



William KLEIN, American, 1928-2022

Kiev Railway Station in Moscow

1956

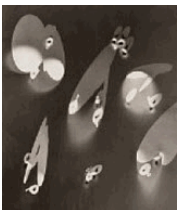
Gelatin silver print

overall: 12 × 16 in. (30.5 × 40.6 cm)

image: 9 3/4 × 14 in. (24.8 × 35.6 cm)

Promised Gift of Private Collection, Santa Barbara

2022.13.13



Ida Lansky, American, born Canada, 1910 - 1997

Miró Image

1950s

Vintage silver gelatin print

image: 9 3/16 × 7 5/8 in. (23.3 × 19.4 cm)

mat: 20 × 16 in. (50.8 × 40.6 cm)

Museum Purchase, Eric A. Skipsey Acquisition Fund

2022.14.1



An-My Lê, American-Vietnamese, b. 1960

Night Operations IV

2003-2004

laser exposed gelatin silver print

image-sheet: 26 1/2 × 38 in. (67.3 × 96.5 cm)

frame: 27 × 38 1/4 in. (68.6 × 97.2 cm)

Museum Purchase, Eric A. Skipsey Acquisition Fund
2019.21



Barbara Maples, American, 1912 - 1999

Untitled

1967-1968

Vintage gelatin silver print

image: 9 1/2 × 7 5/8 in. (24.1 × 19.4 cm)

sheet: 9 7/8 × 8 in. (25.1 × 20.3 cm)

mat: 20 × 16 in. (50.8 × 40.6 cm)

Museum Purchase, Eric A. Skipsey Acquisition Fund
2022.14.4



Robert MAPPLETHORPE, American, 1946-1989

Untitled (Cross) from A Season in Hell

from the series, "A Season in Hell"

1986

Photogravure

frame: 14 1/2 × 10 3/4 in. (36.8 × 27.3 cm)

image: 3 × 2 1/2 in. (7.6 × 6.4 cm)

Gift of Diane Ross Trust
2021.24.13



Mary Ellen Mark, American, 1940 - 2015

Tiny, Halloween, Seattle

1983, printed later

gelatin silver print

sheet: 24 × 20 in. (61 × 50.8 cm)

image: 22 7/8 × 15 1/4 in. (58.1 × 38.7 cm)

Gift of Jonathan Weiss and Mark Kanter
2020.14.25



Ralph Eugene MEATYARD, American, 1925-1972

Untitled

1953

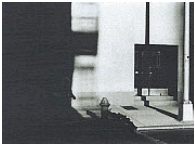
Vintage silver print

image: 8 × 7 3/4 in. (20.3 × 19.7 cm)

mount: 14 × 11 in. (35.6 × 27.9 cm)

Gift of Kenneth A. Turner and Mark A. Albertson

2021.20.7



Ray METZKER, American, 1931-2014

63 HS-2, 1963

1963

Vintage gelatin silver print

image: 8 × 10 in. (20.3 × 25.4 cm)

Gift of Jonathan Weiss and Mark Kanter

2021.32.17



Ray METZKER, American, 1931-2014

82 JN-6, 1982

1982

Vintage gelatin silver print, printed 1986

image-sheet: 11 × 14 in. (27.9 × 35.6 cm)

Gift of Jonathan Weiss and Mark Kanter

2021.32.30



Lee MILLER, American, 1907 - 1977

Colette Aged 71 in her apartment at Rue de Beaujolais, Paris

1944

Gelatin silver print

Gift of Diane Ross Trust

2021.15.7



William C. Odiorne, American (active France 1924-1932), 1881 - 1978

Royal Street, New Orleans

1922

gelatin silver print

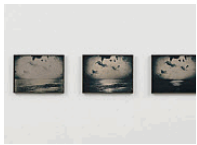
sheet: 8 1/8 × 6 1/8 in. (20.6 × 15.6 cm)

image: 8 × 6 in. (20.3 × 15.2 cm)

mat: 20 × 16 in. (50.8 × 40.6 cm)

Gift of Dennis Reed

2020.15.3



Lisa OPPENHEIM, American, b. 1975

An Effect of Sunlight- Ocean No. 23 (1857/2019) (Version II)

2019

silver toned black and white silver gelatin prints exposed to sunlight

overall: 14 1/8 × 78 1/2 × 1 1/2 in. (35.9 × 199.4 × 3.8 cm)

framed (each): 14 1/8 × 18 3/4 × 1 1/2 in. (35.9 × 47.6 × 3.8 cm)

sheet (each): 13 3/8 × 18 in. (34 × 45.7 cm)

Museum Purchase with Funds provided by PhotoFutures

2019.19a-c



Susan Philipysz, Scottish, b. 1965

Vernebelt IV

2016

chromogenic print mounted on Aludibond behind glass

object: 19 5/8 × 13 1/8 in. (49.8 × 33.3 cm)

Museum Purchase, Eric A. Skipsey Acquisition Fund

2020.18.1



Susan Philipysz, Scottish, b. 1965

Vernebelt V

2016

chromogenic print mounted on Aludibond behind glass

object: 19 3/4 × 11 7/8 in. (50.2 × 30.2 cm)

Museum Purchase, Eric A. Skipsey Acquisition Fund

2020.18.2



August SANDER, German, 1876-1964

High School Student

1926

Vintage gelatin silver print

mat window: 11 1/4 × 6 1/2 in. (28.6 × 16.5 cm)

image: 12 × 9 3/8 in. (30.5 × 23.8 cm)

Gift of Linda Wolcott Moore in Memory of Marion Post Walcott

2021.25



Ursula SCHULZ-DORNBURG, German, b. 1938

Goris-Khndsorek

from the series, "Bus Stops"

2011

gelatin silver print

image: 15 1/4 × 21 3/4 in. (38.7 × 55.2 cm)

sheet: 17 1/4 × 21 3/4 in. (43.8 × 55.2 cm)

mat: 20 × 24 in. (50.8 × 61 cm)

SBMA, Museum purchase with funds provided by PhotoFutures

2017.30



Stephen SHORE, American, b. 1947
Bergen County Courthouse (from portfolio: "New Jersey Courthouses")
2006
Chromogenic print
image: 34 1/4 × 27 in. (87 × 68.6 cm)
sheet: 38 × 30 in. (96.5 × 76.2 cm)
Gift of the Yanover Family Trust
2019.22.4



Aaron SISKIND, American, 1903-1991
Morocco 48
1982, printed later
gelatin silver print
image: 14 × 13 5/8 in. (35.6 × 34.6 cm)
sheet: 19 7/8 × 16 in. (50.5 × 40.6 cm)
SBMA, Gift of Glen and Suzi Serbin
2018.20.2.5



Aaron SISKIND, American, 1903-1991
Rome 70, 1963
1963
vintage gelatin silver print
image: 11 × 14 in. (27.9 × 35.6 cm)
Gift from the J & J Weiss Family Trust
2019.16.24



Robert SMITHSON, American, 1938 - 1973
Torn Photograph from the Second Stop (Rubble): Second Mountain of Six Stops on a Section
1970
4-color offset lithograph on paper, torn in 4 pieces
overall: 21 1/2 × 21 1/2 in. (54.6 × 54.6 cm)
Museum Purchase, Eric A. Skipsey Acquisition Fund
2021.2.9



Thomas STRUTH, German, b. 1954
Wabash Avenue, Madison Street, Chicago
1990
Gelatin silver print
image: 17 1/2 × 21 1/2 in. (44.5 × 54.6 cm)
frame: 29 × 33 3/4 × 1 in. (73.7 × 85.7 × 2.5 cm)
SBMA, Museum Purchase with funds provided by PhotoFutures
2019.18



Josef SUDEK, Czech, 1896-1976

Still Life

from the series, "Glass Labyrinths"

1968-1972

Toned gelatin silver print

image: 11 × 8 1/2 in. (27.9 × 21.6 cm)

frame: 21 1/8 × 17 7/8 × 1 1/2 in. (53.7 × 45.4 × 3.8 cm)

SBMA, Gift of the Charles Newman Trust

2017.44.7



Hiroshi Sugimoto, Japanese, b. 1948

Ionian Sea, Santa Cesarea

from the portfolio, "Time Exposed"

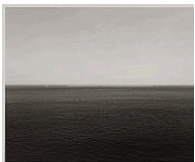
1990, printed 1991

Offset lithograph

sheet: 9 1/2 × 12 1/2 in. (24.1 × 31.8 cm)

Gift of Carol Vernon and Robert Turbin in memory of Marjorie and Leonard Vernon

2022.1.4



Hiroshi Sugimoto, Japanese, b. 1948

Norwegian Sea, Vesteralen Island

from the portfolio, "Time Exposed"

1990, printed 1991

Offset lithograph

sheet: 9 1/2 × 12 1/2 in. (24.1 × 31.8 cm)

Gift of Carol Vernon and Robert Turbin in memory of Marjorie and Leonard Vernon

2022.1.8



Hiroshi Sugimoto, Japanese, b. 1948

Miltoan Sea, Sounion

from the portfolio, "Time Exposed"

1990, printed 1991

Offset lithograph

sheet: 9 1/2 × 12 1/2 in. (24.1 × 31.8 cm)

Gift of Carol Vernon and Robert Turbin in memory of Marjorie and Leonard Vernon

2022.1.11



Hiroshi Sugimoto, Japanese, b. 1948

Atlantic Ocean, Cliffs of Moher

from the portfolio, "Time Exposed"

1989, printed 1991

Offset lithograph

sheet: 9 1/2 × 12 1/2 in. (24.1 × 31.8 cm)

Gift of Carol Vernon and Robert Turbin in memory of Marjorie and Leonard Vernon

2022.1.15



Hiroshi Sugimoto, Japanese, b. 1948

Sea of Japan, Oki

from the portfolio, "Time Exposed"

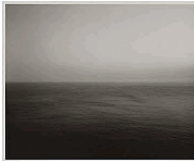
1987, printed 1990

Offset lithograph

sheet: 9 1/2 × 12 1/2 in. (24.1 × 31.8 cm)

Gift of Carol Vernon and Robert Turbin in memory of Marjorie and Leonard Vernon

2022.1.16



Hiroshi Sugimoto, Japanese, b. 1948

Sea of Japan, Hokkaido

from the portfolio, "Time Exposed"

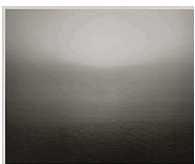
1986, printed 1991

Offset lithograph

sheet: 9 1/2 × 12 1/2 in. (24.1 × 31.8 cm)

Gift of Carol Vernon and Robert Turbin in memory of Marjorie and Leonard Vernon

2022.1.21



Hiroshi Sugimoto, Japanese, b. 1948

Pacific Ocean, Iwate

from the portfolio, "Time Exposed"

1986, printed 1991

Offset lithograph

sheet: 9 1/2 × 12 1/2 in. (24.1 × 31.8 cm)

Gift of Carol Vernon and Robert Turbin in memory of Marjorie and Leonard Vernon

2022.1.22



Hiroshi Sugimoto, Japanese, b. 1948

Tyrrhenian Sea, Amalfi

from the portfolio, "Time Exposed"

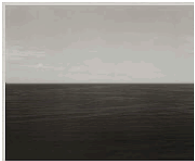
1990, printed 1991

Offset lithograph

sheet: 9 1/2 × 12 1/2 in. (24.1 × 31.8 cm)

Gift of Carol Vernon and Robert Turbin in memory of Marjorie and Leonard Vernon

2022.1.25



Hiroshi Sugimoto, Japanese, b. 1948

South Pacific Ocean, Maraenui

from the portfolio, "Time Exposed"

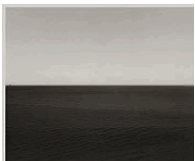
1990, printed 1991

Offset lithograph

sheet: 9 1/2 × 12 1/2 in. (24.1 × 31.8 cm)

Gift of Carol Vernon and Robert Turbin in memory of Marjorie and Leonard Vernon

2022.1.30



Hiroshi Sugimoto, Japanese, b. 1948

South Pacific Ocean, Maraenui

from the portfolio, "Time Exposed"

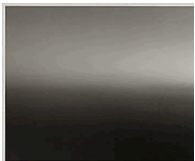
1990, printed 1991

Offset lithograph

sheet: 9 1/2 × 12 1/2 in. (24.1 × 31.8 cm)

Gift of Carol Vernon and Robert Turbin in memory of Marjorie and Leonard Vernon

2022.1.31



Hiroshi Sugimoto, Japanese, b. 1948

Mediterranean Sea, La Ciotat

from the portfolio, "Time Exposed"

1989, printed 1991

Offset lithograph

sheet: 9 1/2 × 12 1/2 in. (24.1 × 31.8 cm)

Gift of Carol Vernon and Robert Turbin in memory of Marjorie and Leonard Vernon

2022.1.34



Hiroshi Sugimoto, Japanese, b. 1948

Mediterranean Sea, Cassis

from the portfolio, "Time Exposed"

1989, printed 1991

Offset lithograph

sheet: 9 1/2 × 12 1/2 in. (24.1 × 31.8 cm)

Gift of Carol Vernon and Robert Turbin in memory of Marjorie and Leonard Vernon

2022.1.35



Wolf VON DEM BUSSCHE, American, born Germany, 1934-2014

American Colossus

1967-1976

gelatin silver print

Promised Gift of Private Collection, Santa Barbara

2021.6.1



Wolf VON DEM BUSSCHE, American, born Germany, 1934-2014

Homage to Kertész

1982

Gelatin silver print, edition 60PF/90

overall: 20 × 16 in. (50.8 × 40.6 cm)

Promised Gift of Private Collection, Santa Barbara

2022.13.10



Henry WESSEL, American, 1942-2018

Night Walk, Los Angeles, No. 28

1995

gelatin silver print

image: 12 1/8 × 17 7/8 in. (30.8 × 45.4 cm)

sheet: 16 × 20 in. (40.6 × 50.8 cm)

mat: 18 × 24 in. (45.7 × 61 cm)

SBMA, Museum purchase with funds provided by PhotoFutures

2017.29.2



Edward WESTON, American, 1886-1958

Cypress--Point Lobos

1929

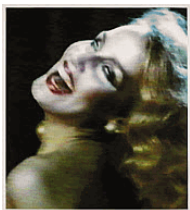
Gelatin silver print

frame: 18 × 15 in. (45.7 × 38.1 cm)

image: 9 1/2 × 7 1/2 in. (24.1 × 19.1 cm)

Gift of Diane Ross Trust

2021.24.3



T.J. WILCOX, American, b. 1965

Rapture (Jerry in Profile)

2007

inkjet print on watercolor paper

frame: 39 3/4 × 36 × 1 7/8 in. (101 × 91.4 × 4.8 cm)

SBMA, Gift of Susan and Robert Lief

2018.33.7



Ernest C Withers, American, 1922 - 2007

I Am a Man

from the portfolio, "I Am a Man"

1956-1968, printed 1994

Gelatin silver print

sheet: 16 × 20 in. (40.6 × 50.8 cm)

Museum Purchase, Eric A. Skipsey Acquisition Fund

2021.26.1



Ernest C Withers, American, 1922 - 2007

Little Rock Nine

from the portfolio, "I Am a Man"

1956-1968, printed 1994

Gelatin silver print

sheet: 16 × 20 in. (40.6 × 50.8 cm)

Museum Purchase, Eric A. Skipsey Acquisition Fund

2021.26.5



Marion Post WOLCOTT, American, 1910-1990

Unemployed Coal Miner's Daughter Carrying Home a Can of Kerosene, Pursglove, Scott's Run, West Virginia

1938, printed later

gelatin silver print

image: 9 × 12 in. (22.9 × 30.5 cm)

sheet: 11 × 14 in. (27.9 × 35.6 cm)

SBMA, Gift of Joan Almond

2016.37.34