

Eugène ZAK, Polish, 1884-1926 (active France)

Women with the Mandolin

ca. 1924

oil on canvas

overall: 39 1/4 × 31 1/4 in. (99.7 × 79.4 cm)

frame: 46 1/4 × 38 1/4 in. (117.5 × 97.2 cm)

SBMA, Gift of Spencer Kellogg, Jr.

1943.5.4



Christopher WOOD, British, 1901-1930

Brittany Harbor

ca. 1929

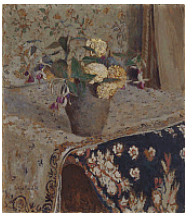
oil on canvas

overall: 18 1/8 × 24 in. (46 × 61 cm)

frame: 23 3/4 × 29 3/4 × 2 1/2 in. (60.3 × 75.6 × 6.4 cm)

SBMA, Gift of James H. Whyte

1953.2.2



Edouard VUILLARD, French, 1868-1940

Fuchsias and French Marigolds (Fuchsias et oeilletts d'Inde)

ca. 1903

oil on cardboard

overall: 18 1/2 × 16 1/2 in. (47 × 41.9 cm)

frame: 26 × 24 in. (66 × 61 cm)

SBMA, Gift of Millicent A. Rogers in honor of Ala Story

1953.28



Wyndham LEWIS, British, 1882-1957

Red and Black Principle

1936

oil on canvas

overall: 46 × 24 in. (116.8 × 61 cm)

frame: 56 1/2 × 34 1/2 × 3 3/8 in. (143.5 × 87.6 × 8.6 cm)

SBMA, Gift of Wright S. Ludington

1956.2.1



Fritz WINTER, German, 1905-1976
Composition
1934
oil on paper mounted on masonite
overall: 19 1/4 × 29 3/4 in. (48.9 × 75.6 cm)
SBMA, Gift of Paul Kantor
1959.73



Clarence HINKLE, American, 1880-1960
Luxembourg Gardens
ca. 1906-1907
oil on canvas
overall: 10 5/8 × 13 3/4 in. (27 × 34.9 cm)
frame: 13 3/4 × 16 3/4 × 1 in. (34.9 × 42.5 × 2.5 cm)
SBMA, Gift of Mabel Bain Hinkle
1961.15



Ralph Albert BLAKELOCK, American, 1847-1919
Silent Night
1889
oil on wood panel
overall: 10 x 7 3/8 in. (25.4 x 18.7 cm)
SBMA, Gift of Mrs. Alfred B. Clark
1962.37



Alexei JAWLENSKY, Russian, 1864-1941
Sorrow
1928
oil wax medium on cardboard
overall: 16 1/8 x 12 1/2 in. (41 x 31.8 cm)
frame: 26 x 22 1/8 x 1 1/4 in. (66 x 56.2 x 3.2 cm)
SBMA, Gift of Mr. and Mrs. Robert B. Baird
1963.11



Jasper Francis CROPSEY, American, 1823-1900
Landscape
1850s
oil on canvas, mounted on board
overall: 11 3/4 x 9 in. (29.8 x 22.9 cm)
SBMA, Gift of George F. MacMurray
1963.42



Frederic Edwin CHURCH, American, 1826-1900

Moonrise in Greece

1889

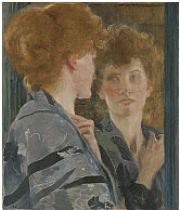
oil on canvas

overall: 14 1/8 x 20 1/4 in. (35.9 x 51.4 cm)

frame: 21 3/8 x 27 1/2 x 3 3/4 in. (54.3 x 69.9 x 9.5 cm)

SBMA, Gift of Mrs. Lockwood de Forest

1966.1



Albert BESNARD, French, 1849-1934

Woman with Red Hair

ca. 1896-1902

oil on canvas

overall: 20 5/8 x 17 3/8 in. (52.4 x 44.1 cm)

frame: 26 x 22 1/2 in. (66 x 57.2 cm)

SBMA, Bequest of Katharine Dexter McCormick in memory of her husband, Stanley McCormick

1968.20.3



Claude MONET, French, 1840-1926

Charing Cross Bridge

1899

oil on canvas

overall: 25 1/8 x 31 3/8 in. (63.8 x 79.7 cm)

frame: 34 x 40 in. (86.4 x 101.6 cm)

SBMA, Bequest of Katharine Dexter McCormick in memory of her husband, Stanley McCormick

1968.20.4



Claude MONET, French, 1840-1926

Villas in Bordighera

1884

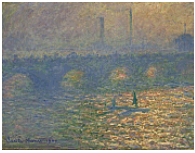
oil on canvas

overall: 29 x 36 3/8 in. (73.7 x 92.4 cm)

frame: 36 x 44 x 3 1/2 in. (91.4 x 111.8 x 8.9 cm)

SBMA, Bequest of Katharine Dexter McCormick in memory of her husband, Stanley McCormick

1968.20.5



Claude MONET, French, 1840-1926

Waterloo Bridge

1900

oil on canvas

overall: 25 3/4 x 36 1/2 in. (65.4 x 92.7 cm)

frame: 33 3/4 x 43 7/8 x 3 1/4 in. (85.7 x 111.4 x 8.3 cm)

SBMA, Bequest of Katharine Dexter McCormick in memory of her husband, Stanley McCormick

1968.20.7



Raoul DUFY, French, 1877-1953

Composition

1926

oil on canvas

overall: 55 1/2 x 59 1/2 in. (141 x 151.1 cm)

frame: 64 3/4 x 68 3/4 in. (164.5 x 174.6 cm)

SBMA, Museum Purchase with funds from the Bequest of Mrs. Alfred B. Clark
1974.41



Antoine-Louis BARYE, French, 1795-1875

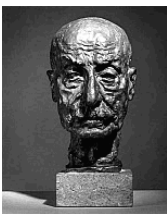
Theseus Slaying the Minotaur

1843 modelled; 1857 cast

bronze

object: 15 7/8 x 19 1/2 in.

SBMA, Museum purchase, Vote for Art Fund
1983.5



Georg KOLBE, German, 1877-1947

Max Lieberman

1929

bronze

object: 12 x 7 x 8 in. (30.5 x 17.8 x 20.3 cm)

base: 2 3/8 x 5 1/2 x 5 1/2 in. (6 x 14 x 14 cm)

SBMA, Gift of B. Gerald Cantor Art Foundation
1985.28



Frank BRANGWYN, British, 1867-1956

Timber-Brig, Sandwich

1886

oil on canvas

overall: 35 1/4 x 23 1/2 in. (89.5 x 59.7 cm)

frame: 43 x 31 x 3 in. (109.2 x 78.7 x 7.6 cm)

SBMA, Gift of Mary and Will Richeson, Jr.
1985.59.1



Léonard Tsuguharu FOUJITA □□ □□, Japanese, active in France, 1886-1968

Le Port De St. Cloud

1939

oil on canvas

overall: 10 5/8 x 14 in. (27 x 35.6 cm)

frame: 17 x 20 1/4 x 2 in. (43.2 x 51.4 x 5.1 cm)

SBMA, Gift of Hall and Lenore Adams

1987.29



Edouard VUILLARD, French, 1868-1940

The Game of Checkers (La Partie de Dames (Tristan Bernard chez Madame Aron))

ca. 1905

oil on canvas

overall: 16 1/2 x 15 1/2 in. (41.9 x 39.4 cm)

frame: 24 1/2 x 23 3/8 x 2 1/2 in. (62.2 x 59.4 x 6.4 cm)

SBMA, Gift of Robert B. and Mercedes H. Eichholz

1991.46.2



Charles DESPIAU, French, 1874-1946

Bust of Margaret Stow Bruce

1929

bronze, ed. 1/3

object: 17 1/2 x 11 3/4 x 13 in. (44.5 x 29.8 x 33 cm)

object with base: 24 x 11 3/4 x 13 in.

base: 5 1/2 x 8 x 5 1/2 in. (14 x 20.3 x 14 cm)

SBMA, Gift of Maria Ealand

1991.70.1



Ernst BARLACH, German, 1870-1938

Der Tod (Pieta)

1925 modelled; post-1938 cast

bronze

object: 12 1/2 x 18 1/2 x 9 1/4 in. (31.8 x 47 x 23.5 cm)

SBMA, Gift of Mrs. Rowe Giesen

1991.87.2



Jean-Jacques HENNER, French, 1829-1905

Idealized Female Head (Tête d'expression)

late 1880s

oil on canvas mounted to panel

overall: 18 1/2 x 12 3/4 in. (47 x 32.4 cm)

frame: 23 3/4 x 18 x 1 3/4 in. (60.3 x 45.7 x 4.4 cm)

SBMA, Gift of the A.E. Clegg Family

1991.89.5



Venezia

ca. 1865

marble

object with base: 25 1/2 x 17 x 9 1/2 in. (64.8 x 43.2 x 24.1 cm)

SBMA, Gift of Joanna and Travers Newton

1991.93.1



Thomas-Pollack ANSHUTZ, USA, 1851-1912

Untitled (Square Rigger at Sea)

c. 1900

oil on panel

frame opening: 8 1/8 x 4 1/8 in. (20.6 x 10.5 cm)

frame: 14 1/8 x 10 1/4 in. (35.9 x 26 cm)

SBMA, Gift of Margaret P. Mallory

1991.154.1



Renée SINTENIS, German, 1888-1965

Self Portrait

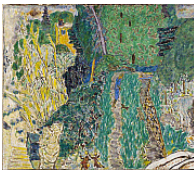
ca. 1920s

cast stone

overall: 12 3/4 x 6 1/2 x 7 7/8 in. (32.4 x 16.5 x 20 cm) 3/1/2019

SBMA, Gift of Margaret P. Mallory

1991.154.29



Pierre BONNARD, French, 1867-1947

Garden with a Small Bridge (Jardin au Petit Pont)

1937

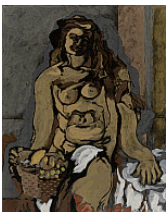
oil on canvas

overall: 39 x 48 7/8 in. (99.1 x 124.1 cm)

frame: 49 3/4 x 59 3/4 x 3 3/4 in. (126.4 x 151.8 x 9.5 cm)

SBMA, Bequest of Wright S. Ludington

1993.1.1



Georges BRAQUE, French, 1882-1963

Nude with Basket of Fruit

1924

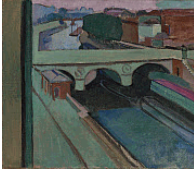
oil on canvas mounted on wood panel

overall: 35 1/2 x 28 1/4 in. (90.2 x 71.8 cm)

frame: 42 3/4 x 35 1/8 x 1 1/2 in. (108.6 x 89.2 x 3.8 cm)

SBMA, Bequest of Wright S. Ludington

1993.1.2



Henri MATISSE, French, 1869-1954

Pont Saint-Michel

ca. 1901

oil on canvas

overall: 23 3/4 x 28 3/4 in. (60.3 x 73 cm)

frame: 31 3/8 x 36 x 1 1/2 in. (79.7 x 91.4 x 3.8 cm)

SBMA, Bequest of Wright S. Ludington

1993.1.5



Henri ROUSSEAU, French, 1844-1910

Castle in Moonlight (Le Donjon)

1889

oil on canvas

overall: 35 1/2 x 27 3/4 in. (90.2 x 70.5 cm)

frame: 42 1/4 x 34 3/4 x 2 1/2 in. (107.3 x 88.3 x 6.4 cm)

SBMA, Bequest of Wright S. Ludington

1993.1.9



Germaine RICHIER, French, 1904-1959

The Leaf (La Feuille)

1948

bronze

object: 55 x 13 x 7 1/2 in. (139.7 x 33 x 19.1 cm)

base: 2 1/2 x 2 3/4 x 6 1/4 in. (6.4 x 7 x 15.9 cm)

SBMA, Bequest of Wright S. Ludington

1993.1.38



Aristide MAILLOL, French, 1861-1944

Bather Putting Up Her Hair

1930

bronze, ed. 3/6

object: 61 x 26 1/2 x 22 in. (154.9 x 67.3 x 55.9 cm)

SBMA, Bequest of Wright S. Ludington

1993.1.39



Jules BASTIEN-LEPAGE, French, 1848-1884

The Ripened Wheat

1884

oil on canvas

overall: 37 1/2 × 43 in. (95.3 × 109.2 cm)

frame: 46 3/16 × 52 15/16 × 4 1/4 in. (117.3 × 134.5 × 10.8 cm)

crate: 67 × 75 × 20 in. (170.2 × 190.5 × 50.8 cm)

SBMA, Museum purchase with funds provided by Suzette and Eugene Davidson and the Davidson Endowment Fund

1995.34



Adrian Paul ALLINSON, British, 1890-1959

Amaryllis

1930s

oil on board

overall: 28 x 26 in. (71.1 x 66 cm)

frame: 33 × 31 1/2 × 2 1/2 in. (83.8 × 80 × 6.4 cm)

SBMA, Gift of Mary and Will Richeson, Jr.

1997.71.5



Ethelbert WHITE, British, 1891-1972

Weariness

ca. 1915

oil on canvas

overall: 24 x 20 in. (61 x 50.8 cm)

frame: 30 1/8 × 26 × 1 3/4 in. (76.5 × 66 × 4.4 cm)

SBMA, Gift of Mary and Will Richeson, Jr.

1997.71.10



Aristide MAILLOL, French, 1861-1944

Torso of Summer (Torse de l'Été)

ca. 1910

bronze, green patina, ed. 4/6

object: 64 x 18 x 13 in. (162.6 x 45.7 x 33 cm)

SBMA, Partial gift of Eva and Yoel Haller

1997.93



Albert BIERSTADT, American, 1830-1902

Newport Lighthouse

1860s

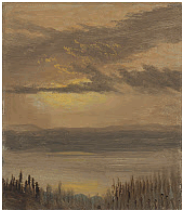
oil on paper mounted on masonite

overall: 10 1/4 x 13 in. (26 x 33 cm)

frame: 16 3/4 x 19 1/2 in. (42.5 x 49.5 cm)

SBMA, Bequest of Margaret Mallory

1998.50.11



Albert BIERSTADT, American, 1830-1902

Sunset on the Hudson

1870s

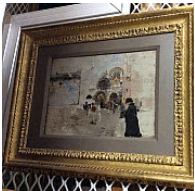
oil on paper mounted on masonite

overall: 9 3/4 x 8 3/8 in. (24.8 x 21.3 cm)

frame: 17 x 15 5/8 x 2 3/4 in. (43.2 x 39.7 x 7 cm)

SBMA, Bequest of Margaret Mallory

1998.50.12



Robert Frederick BLUM, American, 1857-1903

Sketches of Venice-The Lido

1890

oil on panel

Overall: 9 3/8 x 12 5/8 in. (23.8 x 32.1 cm)

SBMA, Bequest of Margaret Mallory

1998.50.15



Johan Barthold JONGKIND, Dutch, 1819-1891 (active France)

Bains et Bateaux Lavoir sur la Seine (pres du Pont Neuf)

ca. 1850

oil on canvas

overall: 10 3/4 x 18 1/4 in. (27.3 x 46.4 cm)

SBMA, Bequest of Margaret Mallory

1998.50.44



Aristide MAILLOL, French, 1861-1944

Torso of Summer

ca. 1910

bronze

object: 56 x 15 x 14 in. (142.2 x 38.1 x 35.6 cm)

SBMA, Bequest of Margaret Mallory

1998.50.51



Jean-François RAFFAËLLI, French, 1850-1924

Vase with Flowers

late 1890s

oil on paper mounted to board

overall: 28 1/2 x 21 1/4 in. (72.4 x 54 cm)

SBMA, Gift of Michael and Jan Schwartz

2005.93.3



Constant TROYON, French, 1810-1865

Under the Trees

ca. 1847

oil on canvas

overall: 28 3/4 x 36 1/4 in. (73 x 92.1 cm)

frame: 35 3/8 x 43 x 3 in. (89.9 x 109.2 x 7.6 cm)

crate: 59 x 63 x 19 in. (149.9 x 160 x 48.3 cm)

SBMA, Gift of Michael and Jan Schwartz

2005.93.5



Armand GUILLAUMIN, French, 1841-1927

Haystacks

n.d.

oil on canvas

overall: 25 3/4 x 32 in. (65.4 x 81.3 cm)

frame: 35 x 41 x 3 1/4 in. (88.9 x 104.1 x 8.3 cm)

SBMA, Gift of Dwight and Winifred Vedder

2006.54.7



Théodore ROUSSEAU, French, 1812-1867

Valley of Saint-Ferjeux, Doubs

ca. 1860-62

oil on canvas

overall: 33 3/8 x 53 1/4 in. (84.8 x 135.3 cm)

frame: 54 1/8 x 68 3/4 x 4 1/2 in. (137.5 x 174.6 x 11.4 cm)

crate: 75 x 86 x 23 in. (190.5 x 218.4 x 58.4 cm)

SBMA, Gift of Lady Ridley-Tree in honor of Phillip M. Johnston

2007.37



Max PECHSTEIN, German, 1881-1955

Die Alte Brücke

1921

oil on canvas

overall: 31 x 39 in. (78.7 x 99.1 cm)

frame: 39 1/8 x 47 x 2 1/2 in. (99.4 x 119.4 x 6.4 cm)

SBMA, Gift of the Joseph B. and Ann S. Koepfli Trust

2011.2



Eugène DELACROIX, French, 1798-1863

Winter: Juno and Aeolus

1856

oil on canvas

overall: 24 x 19 1/2 in. (61 x 49.5 cm)

frame: 32 x 28 1/2 x 4 1/2 in. (81.3 x 72.4 x 11.4 cm)

crate: 53 x 48 x 25 in. (134.6 x 121.9 x 63.5 cm)

SBMA, Museum Purchase, Ludington Antiquities Fund and Ludington Deaccessioning Fund

2013.41



Maurice de VLAMINCK, French, 1876-1958

The Bridge

ca. 1912

oil on canvas

canvas: 19 1/2 x 28 3/4 in. (49.5 x 73 cm)

frame: 29 1/4 x 38 1/2 x 3 1/4 in. (74.3 x 97.8 x 8.3 cm)

SBMA, Gift of The Joseph B. and Ann S. Koepfli Trust

2017.16.2



Jean-Jacques (James) PRADIER, French, born Geneva, 1790 - 1852

Phryne

1845

Bronze

object: 26 in. (66 cm)

Gift of Rowe Collection

2021.30.1



Vincent van GOGH, Dutch, 1853-1890 (active France)

The Outskirts of Paris

1886

oil on canvas

overall: 18 × 21 1/8 in. (45.7 × 53.7 cm)

frame: 27 3/4 × 32 × 4 1/2 in. (70.5 × 81.3 × 11.4 cm)

crate: 48 × 49 × 17 in. (121.9 × 124.5 × 43.2 cm)

Private Collection in memory of Marie Wangeman

L.2005.1



Jean-Baptiste-Camille COROT, French, 1796-1875

Pleasures of the Evening

1875

oil on canvas

overall: 44 1/2 × 65 1/4 in. (113 × 165.7 cm)

frame: 54 1/4 × 75 × 4 1/2 in. (137.8 × 190.5 × 11.4 cm)

crate: 75 × 92 × 17 in. (190.5 × 233.7 × 43.2 cm)

Collection of the Armand Hammer Foundation

L.2014.4.4



Eugène DELACROIX, French, 1798-1863

The Last Words of Marcus Aurelius

After 1844

oil on canvas

overall: 25 5/8 × 31 3/4 in. (65.1 × 80.6 cm)

frame: 32 1/4 × 38 3/4 × 2 3/4 in. (81.9 × 98.4 × 7 cm)

The van Asch van Wyck Trust

L.2014.11