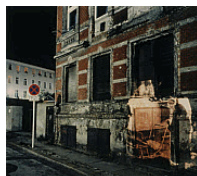


"The Lens of Architecture" Exhibition Checklist



Shimon ATTIE, American, b. 1957

Ruckerstrasse 4, Berlin

1991

chromogenic print

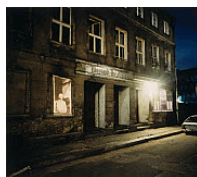
image: 27 x 33 in. (68.6 x 83.8 cm)

sheet: 33 1/2 x 39 1/2 in. (85.1 x 100.3 cm)

frame: 36 5/8 x 44 1/2 x 1 1/2 in. (93 x 113 x 3.8 cm)

SBMA, Museum purchase with funds provided by Morris B. Squire

2001.18.2



Shimon ATTIE, American, b. 1957

Joachimstrasse 20, Berlin

1991

chromogenic print

image: 27 x 33 in. (68.6 x 83.8 cm)

sheet: 33 1/2 x 39 1/2 in. (85.1 x 100.3 cm)

frame: 36 5/8 x 44 5/8 x 1 1/2 in. (93 x 113.3 x 3.8 cm)

SBMA, Museum purchase with funds provided by Morris B. Squire

2001.18.4



Kathleen BARROWS, American, 1925-2007

In the Tuileries

1991

inkjet print

image: 29 x 23 3/4 in. (73.7 x 60.3 cm)

sheet: 38 3/16 x 31 7/8 in. (97 x 81 cm)

frame: 43 1/8 x 35 1/8 x 2 in. (109.5 x 89.2 x 5.1 cm)

SBMA, Gift of Kathleen Barrows

1999.51



Uta BARTH, American, b. 1958

Untitled (NW 8)

1999

chromogenic print

frame opening: 34 3/4 x 43 3/4 in. (88.3 x 111.1 cm)

frame: 35 1/4 x 44 1/4 x 1 1/2 in. (89.5 x 112.4 x 3.8 cm)

SBMA, Gift of Lenore and Herbert Schorr

2013.53.2



Jeff BROUWS, American, b. 1955

Farmland Adjacent to Superstore Construction

2004, printed 2007

inkjet print, AP

image (each): 22 × 22 in. (55.9 × 55.9 cm)

sheet: 24 x 47 1/2 in. (61 x 120.7 cm)

frame: 35 5/8 × 45 5/8 × 1 1/2 in. (90.5 × 115.9 × 3.8 cm)

SBMA, Gift of the Artist

2007.69.1



Laurie BROWN, American, b. 1937

Silentium (diptych)

1994

gelatin silver prints

image (a): 5 1/2 × 40 5/8 in. (14 × 103.2 cm)

image (b): 12 1/2 × 39 in. (31.8 × 99.1 cm)

sheet (a): 9 × 44 1/4 in. (22.9 × 112.4 cm)

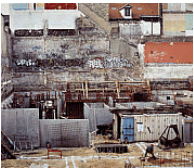
sheet (b): 16 × 42 1/2 in. (40.6 × 108 cm)

frame: 10 1/4 × 45 3/4 × 1 3/4 in. (26 × 116.2 × 4.4 cm)

frame: 17 1/4 × 43 3/4 × 1 3/4 in. (43.8 × 111.1 × 4.4 cm)

SBMA, Museum purchase with funds provided by Eric Skipsey

2005.72.3a,b



Stephane COUTURIER, French, b. 1957

Paris

1996

silver dye bleach print

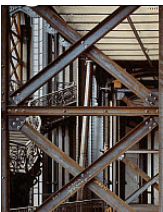
image: 43 1/2 x 54 in. (110.5 x 137.2 cm)

sheet: 50 x 56 in. (127 x 142.2 cm)

frame: 58 1/2 × 66 1/2 × 2 in. (148.6 × 168.9 × 5.1 cm)

SBMA, Museum purchase with funds provided by Mrs. Rowe S. Giesen

1998.30



Stephane COUTURIER, French, b. 1957

Grand Palais, Paris 8m #2/5

1997

silver dye bleach print

image: 62 x 48 3/4 in. (157.5 x 123.8 cm)

sheet: 70 x 50 in. (177.8 x 127 cm)

frame: 75 1/2 × 61 1/2 × 2 in. (191.8 × 156.2 × 5.1 cm)

SBMA, Museum purchase with funds provided by Mrs. Rowe S. Giesen

1999.11

"The Lens of Architecture" Exhibition Checklist



Anthony HERNANDEZ, American, b. 1947

Screened Pictures #1

2017-2018

inkjet print

frame: 55 1/2 × 55 1/2 × 2 in. (141 × 141 × 5.1 cm)

2019.17



John HUMBLE, American, b. 1944

Headwaters, The Los Angeles River, Confluence of Arroyo Calabasas and Bell Creek, Canoga Park

from the series, "The Los Angeles River"

2001

chromogenic print, ed. 1/15

image (sight): 31 x 39 in. (78.7 x 99.1 cm)

frame: 42 3/4 x 50 1/4 x 1 1/4 in. (108.6 x 127.6 x 3.2 cm)

SBMA, Museum Purchase with funds provided by Amanda MacIntyre

2007.17



Eiji Ina, Japanese, b. 1957

Emperor Kōgen

from the series "Emperor of Japan"

2005, printed 2008

gelatin silver print, ed. of 5

image: 13 1/2 × 17 in. (34.3 × 43.2 cm)

frame: 23 1/2 × 27 1/2 × 7/8 in. (59.7 × 69.9 × 2.2 cm)

SBMA, Gift of Chris Pichler

2015.29.2



Janna Ireland, American, b. 1985

Hillside Memorial Park, Number 1

2019

archival pigment print

image: 24 × 36 in. (61 × 91.4 cm)

sheet: 28 × 40 in. (71.1 × 101.6 cm)

Museum Purchase, Eric A. Skipsey Acquisition Fund

2021.5.1

"The Lens of Architecture" Exhibition Checklist



Janna Ireland, American, b. 1985
Hillside Memorial Park, Number 2

2019

archival pigment print

image: 24 × 36 in. (61 × 91.4 cm)

sheet: 28 × 40 in. (71.1 × 101.6 cm)

Museum Purchase, Eric A. Skipsey Acquisition Fund
2021.5.2



Janna Ireland, American, b. 1985
Hillside Memorial Park, Number 3

2019

archival pigment print

image: 24 × 36 in. (61 × 91.4 cm)

sheet: 28 × 40 in. (71.1 × 101.6 cm)

Museum Purchase, Eric A. Skipsey Acquisition Fund
2021.5.3



An-My Lê, American-Vietnamese, b. 1960

Untitled, But Thap, Việt Nam

1996

Gelatin silver print, edition 4 of 10

image: 23 × 16 in. (58.4 × 40.6 cm)

frame: 27 3/4 × 21 1/8 in. (70.5 × 53.7 cm)

Museum Purchase, Funds Provided by The Dana and Albert R. Broccoli Charitable
Foundation
2021.22



Richard H. ROSS, American, b. 1947

Chateaudun, France

1983

chromogenic print

image (sight): 28 7/8 × 28 7/8 in.

frame: 45 1/4 × 40 1/4 × 3/4 in. (114.9 × 102.2 × 1.9 cm)

SBMA, Gift of Mr. and Mrs. Barry Berkus
1986.26

"The Lens of Architecture" Exhibition Checklist



Richard H. ROSS, American, b. 1947

Musee National d'Histoire Naturelle, Paris, France

1982

chromogenic print

mat window: 32 x 29 1/4 in. (81.3 x 74.3 cm)

frame: 39 3/4 x 36 3/4 x 2 in. (101 x 93.3 x 5.1 cm)

SBMA, Gift of Bruce and Nancy Berman

1998.57.39



Mario YBARRA JR., American, b. 1973

Go Tell It #1

2001

inkjet print, ed. 1/5

image (sight): 47 1/4 x 59 3/8 in. (120 x 150.8 cm)

frame: 49 x 61 x 2 in. (124.5 x 154.9 x 5.1 cm)

SBMA, Museum Purchase with funds provided by Hilarie and Mark Moore and The Moore Family Trust

2009.55