



Milton AVERY, American, 1885-1965

Sitter by the Beach

1944

watercolor and gouache on paper

overall: 22 × 30 in. (55.9 × 76.2 cm)

SBMA, Museum purchase, Acquisition Fund
1956.12



Milton AVERY, American, 1885-1965

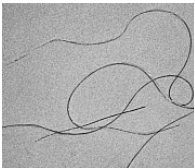
Putnam's Pond

1941

oil on canvas

overall: 32 x 48 in. (81.3 x 121.9 cm)

SBMA, Partial Gift of Mr. and Mrs. Eli Luria
2002.68



Nicola DILL, German, b. 1959 (active USA)

Sea Etching #39

2007

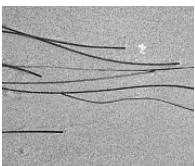
inkjet print

image-sheet: 3 7/8 × 4 7/8 in. (9.8 × 12.4 cm)

mount: 6 3/4 x 7 3/4 in. (17.1 x 19.7 cm)

frame: 9 1/4 x 10 1/8 x 1 1/2 in. (23.5 x 25.7 x 3.8 cm)

SBMA, Museum Purchase with funds provided by PhotoFutures
2012.21.1



Nicola DILL, German, b. 1959 (active USA)

Sea Etching #41

2007

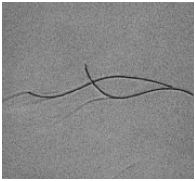
inkjet print

image-sheet: 3 7/8 × 4 7/8 in. (9.8 × 12.4 cm)

mount: 6 3/4 x 7 3/4 in. (17.1 x 19.7 cm)

frame: 9 1/4 x 10 1/8 x 1 1/2 in. (23.5 x 25.7 x 3.8 cm)

SBMA, Museum Purchase with funds provided by PhotoFutures
2012.21.2



Nicola DILL, German, b. 1959 (active USA)

Sea Etching #42

2007

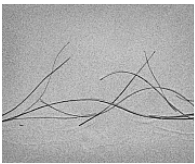
inkjet print

image-sheet: 3 7/8 × 4 7/8 in. (9.8 × 12.4 cm)

mount: 6 3/4 x 7 3/4 in. (17.1 x 19.7 cm)

frame: 9 1/4 x 10 1/8 x 1 1/2 in. (23.5 x 25.7 x 3.8 cm)

SBMA, Museum Purchase with funds provided by PhotoFutures
2012.21.3



Nicola DILL, German, b. 1959 (active USA)

Sea Etching #44

2007

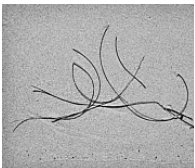
inkjet print

image-sheet: 3 7/8 × 4 7/8 in. (9.8 × 12.4 cm)

mount: 6 3/4 x 7 3/4 in. (17.1 x 19.7 cm)

frame: 9 1/4 x 10 1/8 x 1 1/2 in. (23.5 x 25.7 x 3.8 cm)

SBMA, Museum Purchase with funds provided by PhotoFutures
2012.21.4



Nicola DILL, German, b. 1959 (active USA)

Sea Etching #47

2007

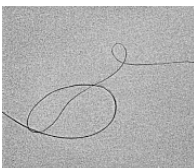
inkjet print

image-sheet: 3 7/8 × 4 7/8 in. (9.8 × 12.4 cm)

mount: 6 3/4 x 7 3/4 in. (17.1 x 19.7 cm)

frame: 9 1/4 x 10 1/8 x 1 1/2 in. (23.5 x 25.7 x 3.8 cm)

SBMA, Museum Purchase with funds provided by PhotoFutures
2012.21.5



Nicola DILL, German, b. 1959 (active USA)

Sea Etching #51

2007

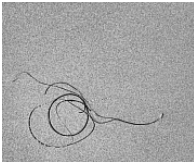
inkjet print

image-sheet: 3 7/8 × 4 7/8 in. (9.8 × 12.4 cm)

mount: 6 3/4 x 7 3/4 in. (17.1 x 19.7 cm)

frame: 9 1/4 x 10 1/8 x 1 1/2 in. (23.5 x 25.7 x 3.8 cm)

SBMA, Museum Purchase with funds provided by PhotoFutures
2012.21.6



Nicola DILL, German, b. 1959 (active USA)

Sea Etching #55

2008

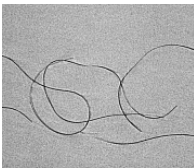
inkjet print

image-sheet: 3 7/8 × 4 7/8 in. (9.8 × 12.4 cm)

mount: 6 3/4 x 7 3/4 in. (17.1 x 19.7 cm)

frame: 9 1/4 x 10 1/8 x 1 1/2 in. (23.5 x 25.7 x 3.8 cm)

SBMA, Museum Purchase with funds provided by PhotoFutures
2012.21.7



Nicola DILL, German, b. 1959 (active USA)

Sea Etching #56

2008

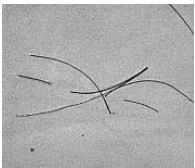
inkjet print

image-sheet: 3 7/8 × 4 7/8 in. (9.8 × 12.4 cm)

mount: 6 3/4 x 7 3/4 in. (17.1 x 19.7 cm)

frame: 9 1/4 x 10 1/8 x 1 1/2 in. (23.5 x 25.7 x 3.8 cm)

SBMA, Museum Purchase with funds provided by PhotoFutures
2012.21.8



Nicola DILL, German, b. 1959 (active USA)

Sea Etching #57

2009

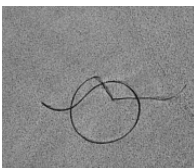
inkjet print

image-sheet: 3 7/8 × 4 7/8 in. (9.8 × 12.4 cm)

mount: 6 3/4 x 7 3/4 in. (17.1 x 19.7 cm)

frame: 9 1/4 x 10 1/8 x 1 1/2 in. (23.5 x 25.7 x 3.8 cm)

SBMA, Museum Purchase with funds provided by PhotoFutures
2012.21.9



Nicola DILL, German, b. 1959 (active USA)

Sea Etching #60

2009

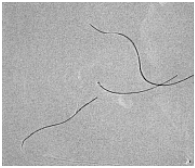
inkjet print

image-sheet: 3 7/8 × 4 7/8 in. (9.8 × 12.4 cm)

mount: 6 3/4 x 7 3/4 in. (17.1 x 19.7 cm)

frame: 9 1/4 x 10 1/8 x 1 1/2 in. (23.5 x 25.7 x 3.8 cm)

SBMA, Museum Purchase with funds provided by PhotoFutures
2012.21.10



Nicola DILL, German, b. 1959 (active USA)

Sea Etching #62

2009

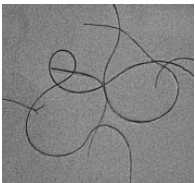
inkjet print

image-sheet: 3 7/8 × 4 7/8 in. (9.8 × 12.4 cm)

mount: 6 3/4 × 7 3/4 in. (17.1 × 19.7 cm)

frame: 9 1/4 × 10 1/8 × 1 1/2 in. (23.5 × 25.7 × 3.8 cm)

SBMA, Museum Purchase with funds provided by PhotoFutures
2012.21.11



Nicola DILL, German, b. 1959 (active USA)

Sea Etching #65

2007

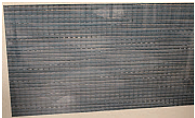
inkjet print

image-sheet: 3 7/8 × 4 7/8 in. (9.8 × 12.4 cm)

mount: 6 3/4 × 7 3/4 in. (17.1 × 19.7 cm)

frame: 9 1/4 × 10 1/8 × 1 1/2 in. (23.5 × 25.7 × 3.8 cm)

SBMA, Museum Purchase with funds provided by PhotoFutures
2012.21.12



Robbert FLICK, Dutch, b. 1939 (active USA)

At Cambria

2002

ilfochrome, ed. 1/5

image: 39 5/8 × 71 3/8 in. (100.6 × 181.3 cm)

sheet: 50 × 82 1/4 in. (127 × 208.9 cm)

frame: 54 1/8 × 85 × 2 in. (137.5 × 215.9 × 5.1 cm)

SBMA, Museum purchase with funds provided by Eric Skipsey
2003.5



Utagawa HIROSHIGE 画 斎 広 重, Japanese, 1797-1858

Mt. Fuji and Mt. Ashigara in Clear Weather after a Snowfall, Numazu Station 13

from the series "Famous Sights of the Fifty-three Stations"

1855 (series first issued)

color woodblock print on paper

image: 13 1/2 × 8 7/8 in.

sheet: 14 3/4 × 10 in. (37.5 × 25.4 cm)

mat: 16 × 22 in. (40.6 × 55.9 cm)

SBMA, Anonymous Donor
00.214.2



Utagawa HIROSHIGE 歌川 国芳, Japanese, 1797-1858

Tora's Rain, Ōiso Station 9

from the series "53 Stations of Tōkaidō Road"

1833-1834

color woodblock print on paper

image: 9 × 14 in. (22.9 × 35.6 cm)

sheet: 9 7/8 × 14 7/8 in. (25.1 × 37.8 cm)

mat: 16 × 22 in. (40.6 × 55.9 cm)

SBMA, Gift of the Frederick B. Kellam collection

1971.3.1.9



Utagawa HIROSHIGE 歌川 国芳, Japanese, 1797-1858

View of Mt. Akiba, Kakegawa Station 27

from the series "53 Stations of Tōkaidō Road"

1833-1834

color woodblock print on paper

image: 8 7/8 × 14 in. (22.5 × 35.6 cm)

sheet: 9 1/2 × 14 1/4 in. (24.1 × 36.2 cm)

mat: 16 × 22 in. (40.6 × 55.9 cm)

SBMA, Gift of the Frederick B. Kellam collection

1971.3.1.27



Utagawa HIROSHIGE 歌川 国芳, Japanese, 1797-1858

Mie River, Yokkaichi Station 44

from the series "53 Stations of Tōkaidō Road"

1833-1834

color woodblock print on paper

image: 8 7/8 × 13 7/8 in. (22.5 × 35.2 cm)

sheet: 9 3/4 × 14 1/2 in. (24.8 × 36.8 cm)

mat: 16 × 22 in. (40.6 × 55.9 cm)

SBMA, Gift of the Frederick B. Kellam collection

1971.3.1.44



Utagawa HIROSHIGE 歌川 国芳, Japanese, 1797-1858

Driving Rain, Shōno Station 46

from the series "53 Stations of Tōkaidō Road"

1833-1834

color woodblock print on paper

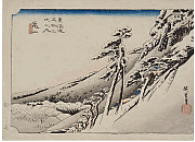
sheet: 9 3/4 × 14 7/8 in. (24.8 × 37.8 cm)

image: 8 7/8 × 13 3/4 in. (22.5 × 34.9 cm)

mat: 16 × 22 in. (40.6 × 55.9 cm)

SBMA, Gift of the Frederick B. Kellam collection

1971.3.1.46



Utagawa HIROSHIGE □□ □□, Japanese, 1797-1858

Clear Weather After Snow, Kameyama Station 47

from the series "53 Stations of Tōkaidō Road"

1833-1834

color woodblock print on paper

image: 9 × 13 7/8 in. (22.9 × 35.2 cm)

sheet: 10 1/8 × 15 in. (25.7 × 38.1 cm)

mat: 16 × 22 in. (40.6 × 55.9 cm)

SBMA, Gift of the Frederick B. Kellam collection

1971.3.1.47



Utagawa HIROSHIGE □□ □□, Japanese, 1797-1858

Travelers in Snow, Ishiyakushi Station 45

from the series "53 Stations of Tōkaidō Road"

1841-1844

color woodblock print on paper

image: 7 7/8 × 15 1/2 in. (20 × 39.4 cm)

sheet: 8 5/8 × 13 in. (21.9 × 33 cm)

mat: 16 × 22 in. (40.6 × 55.9 cm)

SBMA, Gift of the Frederick B. Kellam collection

1971.3.17



Katsushika HOKUSAI □□□□, Japanese, 1760-1849

Snow on the Sumida River

from the series, Snow, Moon, and Flowers

c. 1833

color woodblock print on paper

sheet: 10 1/4 × 15 1/8 in.

mat: 16 × 22 in. (40.6 × 55.9 cm)

SBMA, Gift of the Frederick B. Kellam collection

1971.3.316



Kobayashi KIYOCHIKA □□□□, Japanese, 1847-1915

Advance in Snowstorm

from the series "Views of the Sights of Tokyo"

1895

color woodblock print on paper, triptych

sheet (a): 13 3/4 × 9 1/8 in. (34.9 × 23.2 cm)

sheet (b): 13 3/4 × 9 1/8 in. (34.9 × 23.2 cm)

sheet (c): 13 3/4 × 9 1/8 in. (34.9 × 23.2 cm)

mat: 18 × 34 in. (45.7 × 86.4 cm)

SBMA, Gift of Dr. and Mrs. Roland A. Way

1986.31.72a-c



Kobayashi KIYOCHIKA □□□□, Japanese, 1847-1915

Matsuchi Hill at Dusk under Snow, Second Month

from the series "Views of the Sights of Tokyo"

1896

color woodblock print on paper, triptych

sheet (a): 15 1/8 × 10 1/2 in. (38.4 × 26.7 cm)

sheet (b): 14 5/8 × 10 1/8 in. (37.1 × 25.7 cm)

sheet (c): 15 1/8 × 10 3/8 in. (38.4 × 26.4 cm)

mat: 18 × 34 in. (45.7 × 86.4 cm)

SBMA, Gift of Dr. and Mrs. Roland A. Way

1986.31.86a-c



Utawaga KUNISADA □□□□, Japanese, 1786-1864

The Murder of Yoichibei: Scene from a kabuki play depicted as travelers in a landscape Act V Scene 2

from a Chūshingura series

series first issued late 1840s

color woodblock print on paper

sheet (oban): 10 × 13 7/8 in.

image: 9 1/8 × 13 7/8 in. (23.2 × 35.2 cm)

SBMA, Gift of the Frederick B. Kellam collection

1971.3.129



Yasuo KUNIYOSHI, American, 1893-1953

Weather Vane and Sculpture Cast

1933

charcoal, crayon and Chinese white on paper

mat window: 19 1/8 × 15 1/8 in. (48.6 × 38.4 cm)

frame: 29 1/2 x 25 1/2 x 2 in. (74.9 x 64.8 x 5.1 cm)

SBMA, Museum purchase, American Deaccession Fund

1989.22



Yasuo KUNIYOSHI, American, 1893-1953

Tight Rope Performer

1936

lithograph

sheet: 16 x 11 3/8 in. (40.6 x 28.9 cm)

image: 13 x 9 in. (33 x 22.9 cm)

Lent by the U.S. Government, Federal Art Project

L.1983.13.24



Utagawa KUNIYOSHI □□□□, Japanese, 1798-1861

Nightwalker Carrying a Straw Mat with Dog, Parody for Yūgao and Orie

from the series, "Scenes amid Genji Clouds Matched with Ukiyo-e Pictures"

1845-1846

color woodblock print on paper

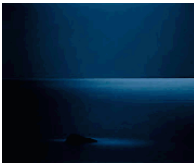
sheet: 14 1/2 × 9 3/4 in. (36.8 × 24.8 cm)

image: 14 × 9 in. (35.6 × 22.9 cm)

mat: 16 × 22 in. (40.6 × 55.9 cm)

Lent by Seymour and Shirley Lehrer

L.2012.3.64



Kazuumi Takahashi, Japanese, b. 1963

#37

from the series "High Tide Wane Moon"

2002

inkjet print, ed. of 10

image (sight): 16 3/4 × 21 1/4 in. (42.5 × 54 cm)

frame: 20 1/2 × 24 1/2 × 1 1/2 in. (52.1 × 62.2 × 3.8 cm)

SBMA, Gift of Chris Pichler

2015.29.1.1



Kazuumi Takahashi, Japanese, b. 1963

#36

from the series "High Tide Wane Moon"

2002

inkjet print, ed. of 10

image (sight): 16 5/8 × 21 1/4 in. (42.2 × 54 cm)

frame: 20 1/2 × 24 1/2 × 1 3/8 in. (52.1 × 62.2 × 3.5 cm)

SBMA, Gift of Chris Pichler

2015.29.1.2



Key Block

Japan, late 18th century

cherry wood

object (irreg.): 10 3/4 x 7 x 5/8 in. (27.3 x 17.8 x 1.6 cm)

SBMA, Gift of Mr. and Mrs. Joseph Krene

1985.19.1a,b



Carving Tools and Baren for Printing

Japan, 20th century

wood, metal and bamboo

object (b): $8 \frac{3}{8} \times \frac{3}{4} \times \frac{1}{2}$ in. (21.3 × 1.9 × 1.3 cm)

object (a): $8 \frac{1}{2} \times \frac{3}{4} \times \frac{1}{2}$ in. (21.6 × 1.9 × 1.3 cm)

object (c): $8 \frac{5}{8} \times 1 \times \frac{5}{8}$ in. (21.9 × 2.5 × 1.6 cm)

object (d): $8 \frac{3}{4} \times \frac{7}{8} \times \frac{1}{2}$ in. (22.2 × 2.2 × 1.3 cm)

object (e): $\frac{3}{4} \times 5$ in. (1.9 × 12.7 cm)

object (f): $1 \times 6 \frac{5}{8}$ in. (2.5 × 16.8 cm)

SBMA, Gift of Ron Robertson

2001.73.1a-f



Tsukioka YOSHITOSHI □□□□, Japanese, 1839-1892

Illustration to Rustic Genji by a Fraudulent Murasaki

n.d.

color woodblock print on paper, vertical diptych

mat window: $27 \frac{3}{4} \times 9 \frac{1}{8}$ in. (70.5 × 23.2 cm)

frame: $35 \frac{1}{2} \times 16 \frac{1}{2} \times \frac{3}{4}$ in. (90.2 × 41.9 × 1.9 cm)

image: $28 \times 9 \frac{1}{4}$ in. (71.1 × 23.5 cm)

mat: 36×18 in. (91.4 × 45.7 cm)

SBMA, Gift of Dan Fauci

1995.49.7